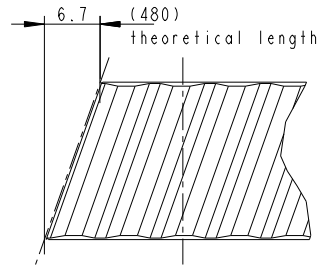


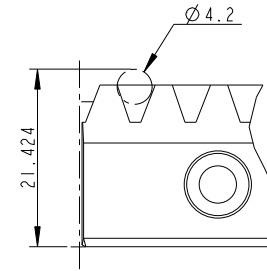


APEX DYNAMICS, INC.

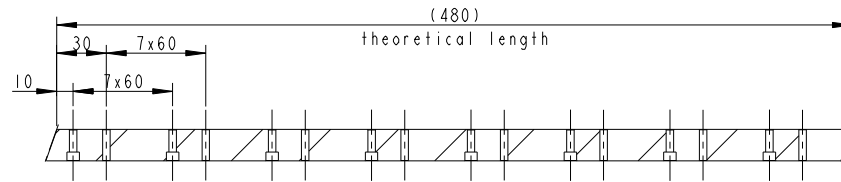
Ordering code	0206R050C10A1
Module	2
Number of Teeth	72
Pressure angle	20°
Helix angle	19.528°RH
Quality	06
Total Pitch Error (um)	GTf 29



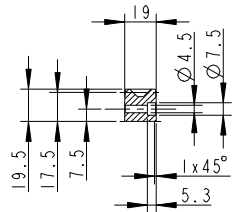
SCALE 5:1



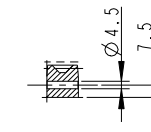
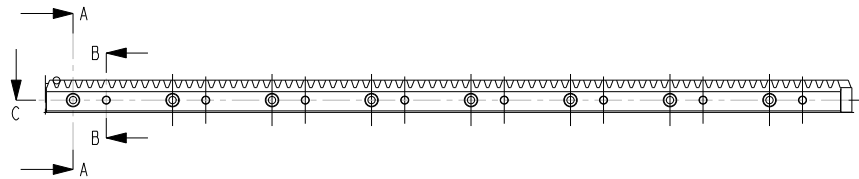
SCALE 5:1



SECTION C-C



SECTION A-A



SECTION B-B